

Corner of Kernsville Road and Route 309



Siegersville (Orefield) Hotel

The **Hotel** was erected on the northwest corner of the village crossroads of **Kernsville Road and Route 309**, about 1855.

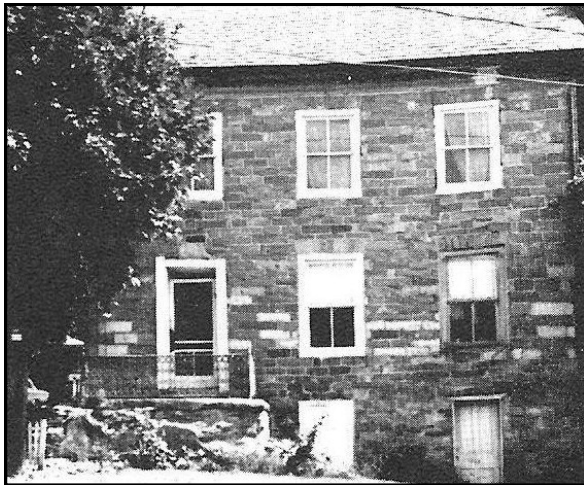
Also at the corner, was the home of the Old Tavern House (1750), which was a convenient stopping place for travelers on the highway; therefore, it soon was converted into an Inn to accommodate travelers from Philadelphia to the Buckhorn Tavern at Shimersville, thence through Siegersville to the Bake Oven Knob on the Blue Mountain. It is said to have been the **first country hotel in the County**.

Our Living PAST !



Siegersville (Orefield) Post Office

Siegersville was made a post-office location around the 28th of February, 1833. The village had telegraphic communication, and the **Siegersville** Branch of the Ironton Railroad connected at Coplay with the Lehigh Valley Railroad and the great outer world of commerce.



Siegersville's first store was started in the old two-story stone building on the southeast corner of the village crossroads and was erected before 1800.

Being situated at the intersection of two main thoroughfares, it has always been a thriving place, independent of the support derived from the iron ore-mines, and in the olden days, it was the scene of many a festal gathering.

In 1880, Siegersville had 160 residents and dwelling houses were around 30—35. Today, Siegersville is now the village of Orefield and has increased tremendously over the years.

Really interesting facts and history about the community you may live in!

Next issue of **"What's Going On"**, we will take a look at a bit of history of Schnecksville.